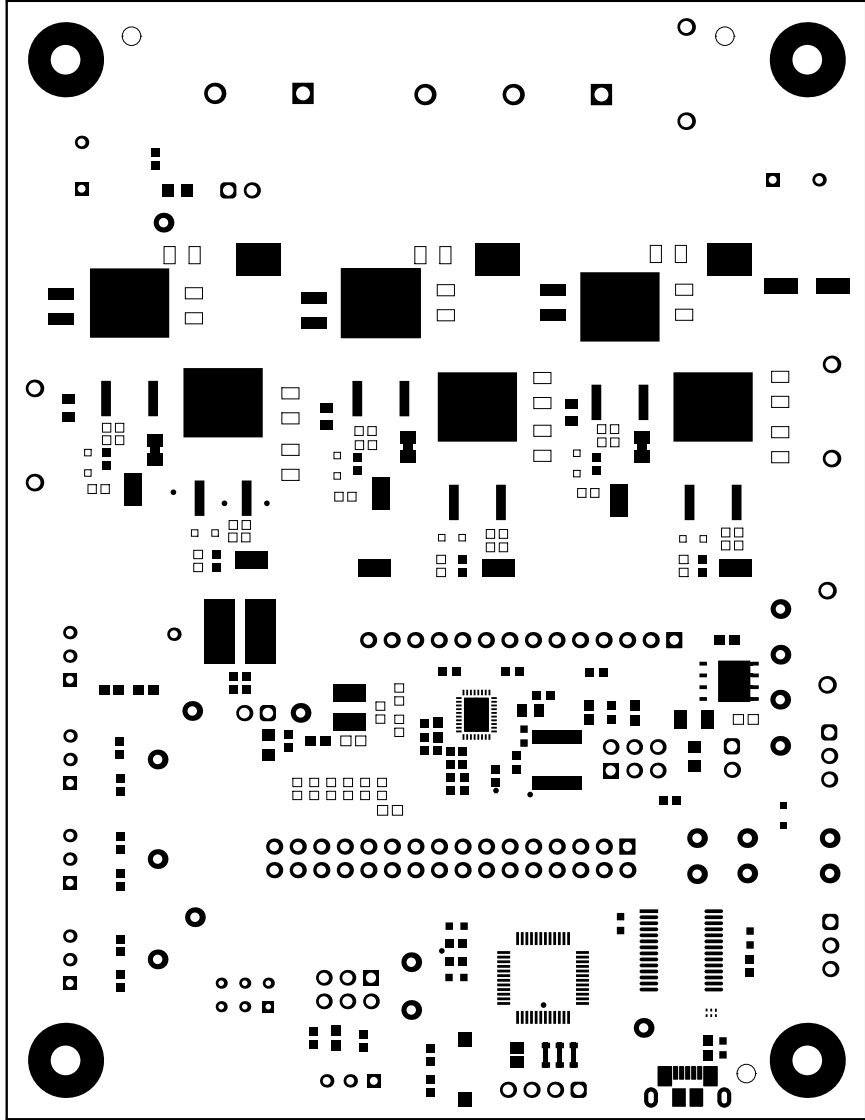


ZZ2

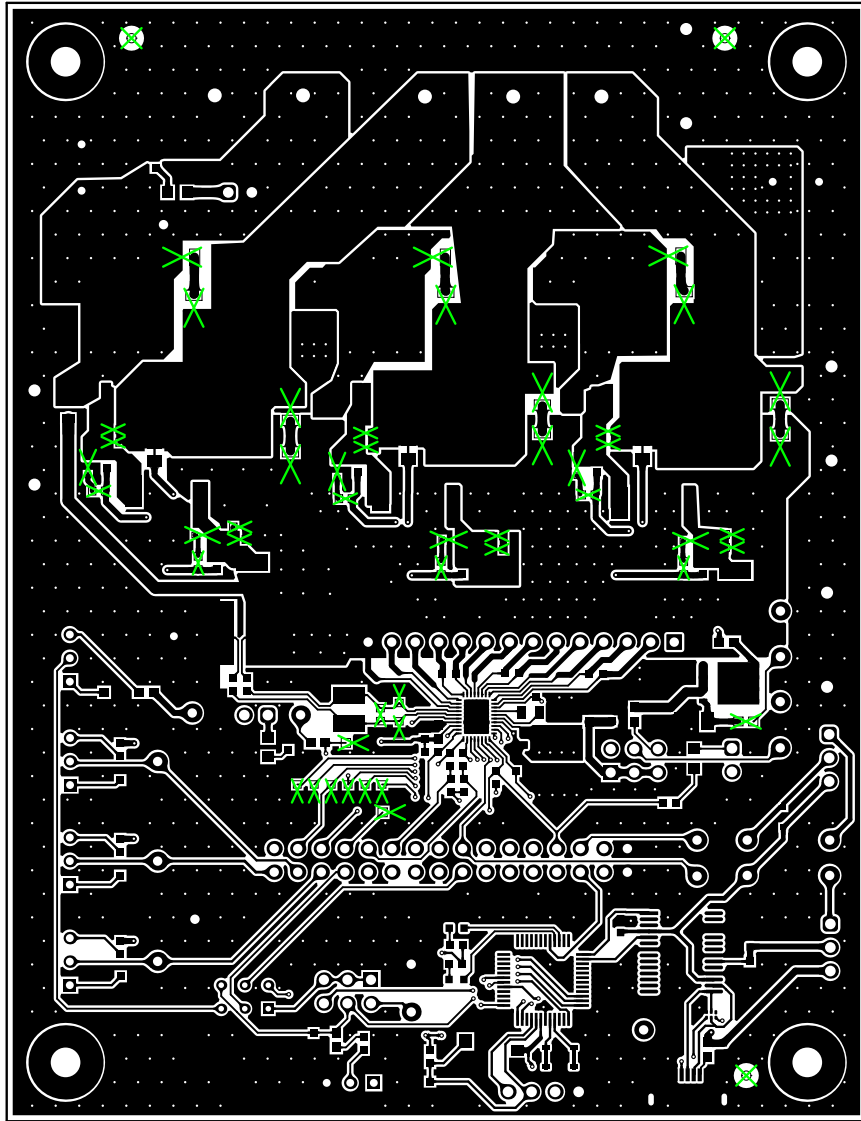
ZZ4

ZZ3

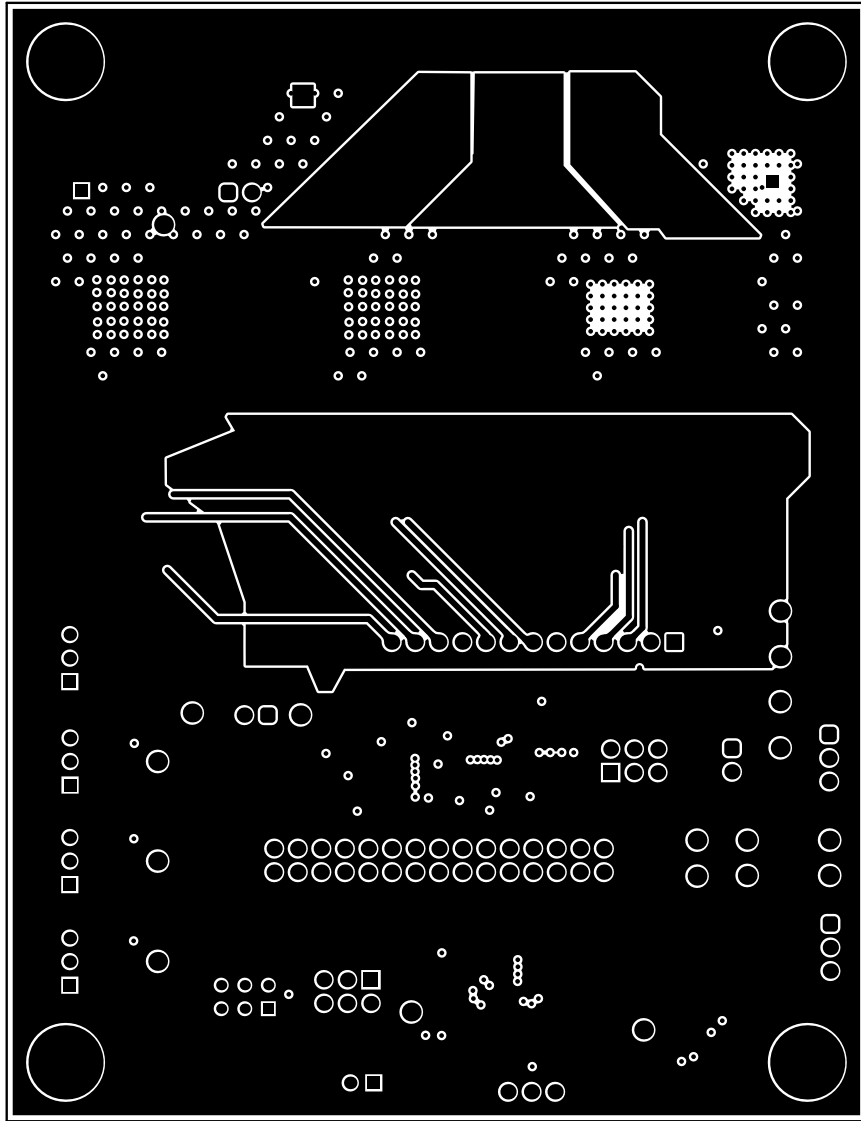
ALL ARTWORK VIEWED FROM TOP SIDE	BOARD #: MD067	REV: D	SUN REV: Not in version control
LAYER NAME = Top Overlay	TID #: N/A		
PLOT NAME = Top Overlay	GENERATED : 8/15/2024 4:04:12 PM	TEXAS INSTRUMENTS	



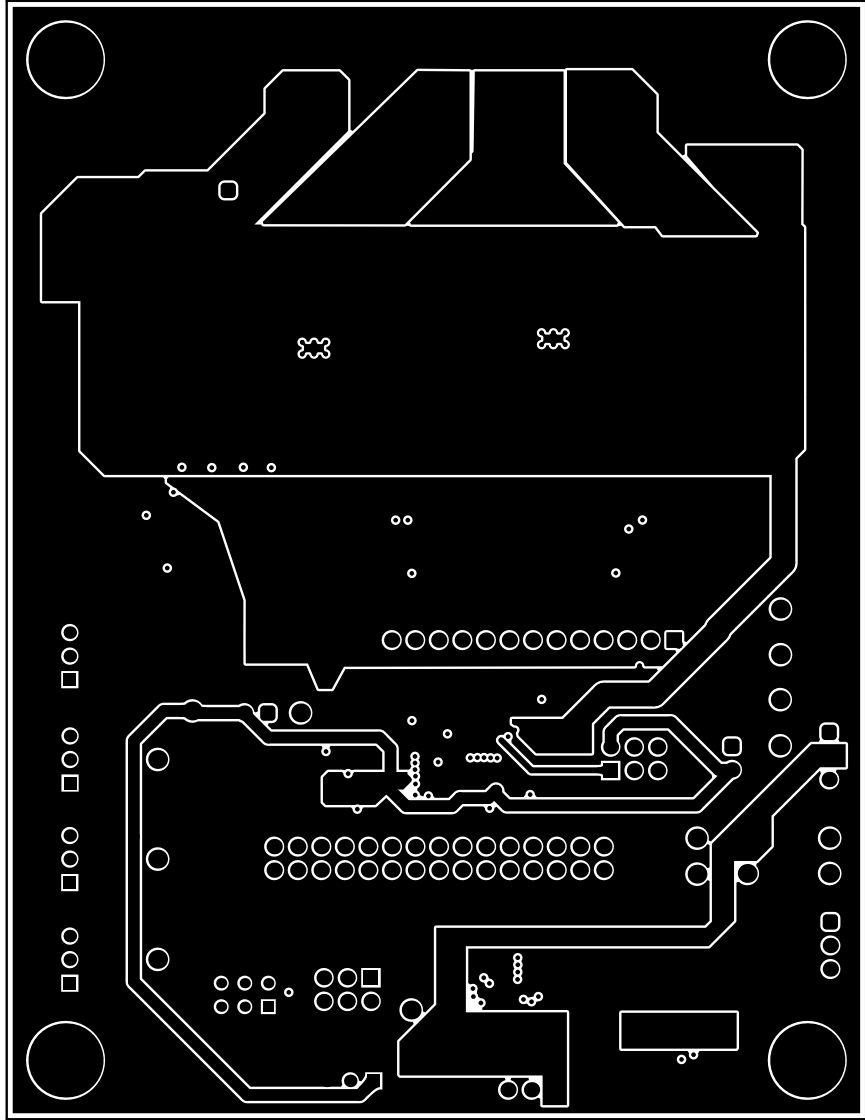
ALL ARTWORK VIEWED FROM TOP SIDE	BOARD #: MD067	REV: D	SUN REV: Not in version control
LAYER NAME = Top Solder	TID #: N/A		
PLOT NAME = Top Solder Mask	GENERATED : 8/15/2024 4:04:12 PM	TEXAS INSTRUMENTS	



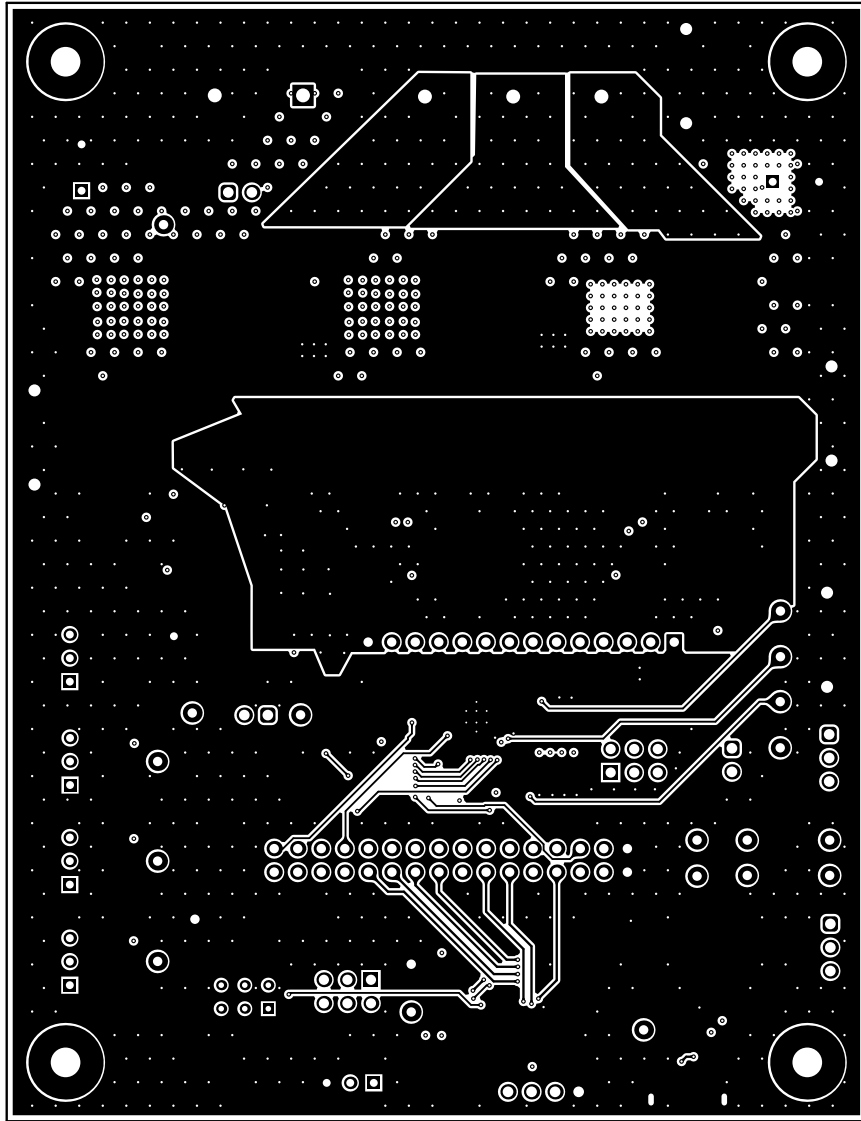
ALL ARTWORK VIEWED FROM TOP SIDE	BOARD #: MD067	REV: D	SUN REV: Not in version control
LAYER NAME =	TID #: N/A		
PLOT NAME = Top Layer	GENERATED : 8/15/2024 4:04:12 PM	TEXAS INSTRUMENTS	



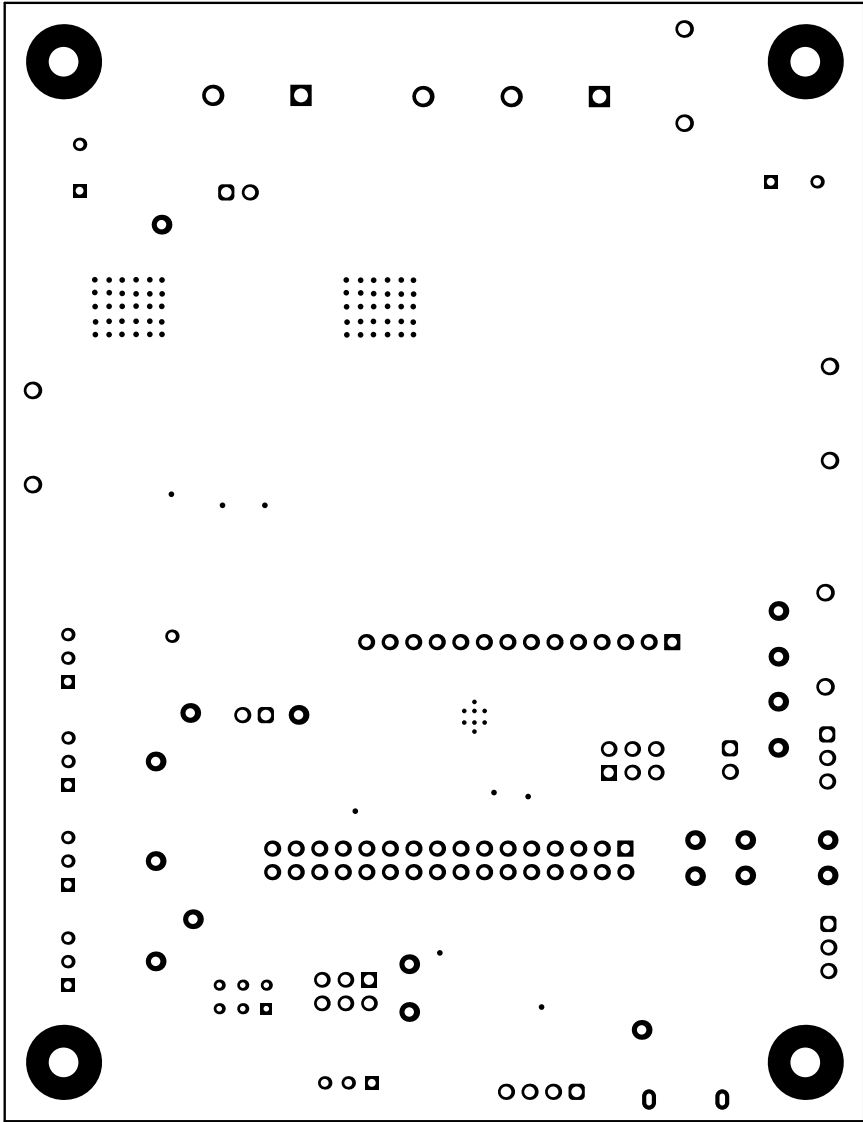
ALL ARTWORK VIEWED FROM TOP SIDE	BOARD #: MD067	REV: D	SUN REV: Not in version control
LAYER NAME =	TID #: N/A		
PLOT NAME = Signal 1	GENERATED : 8/15/2024 4:04:13 PM	TEXAS INSTRUMENTS	



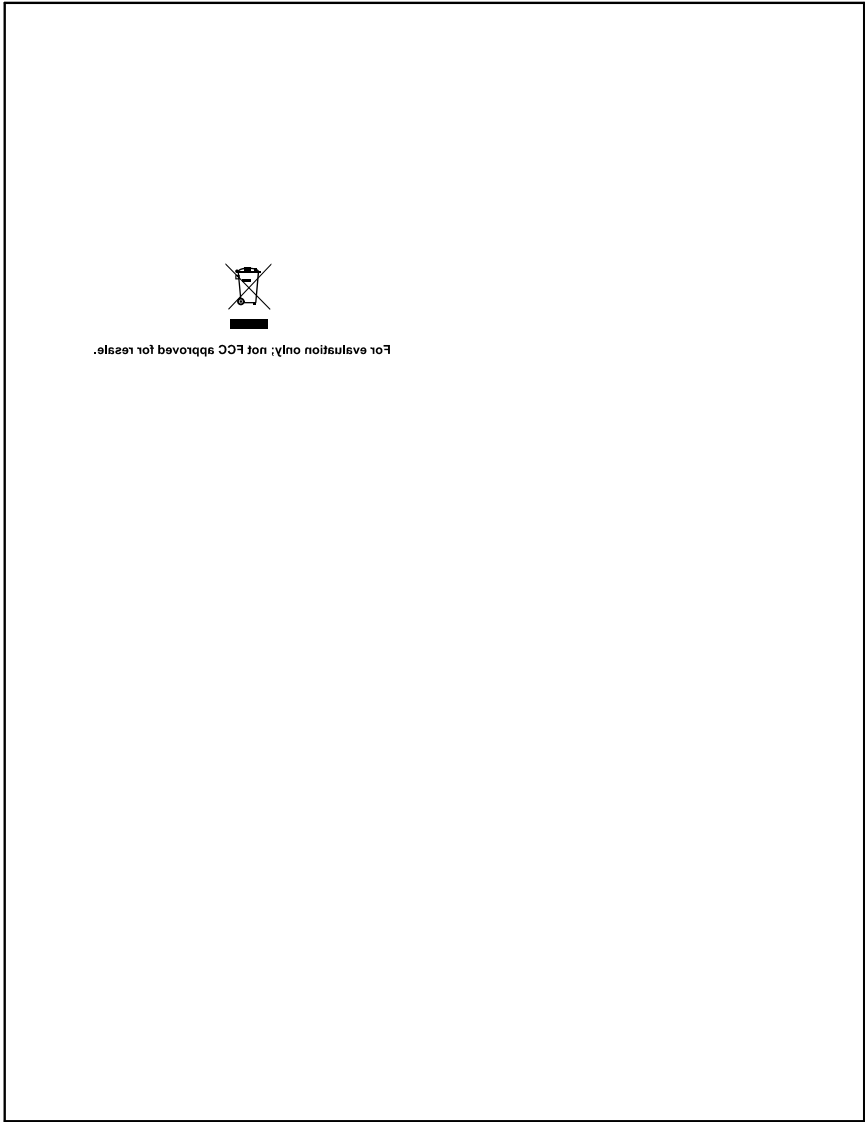
ALL ARTWORK VIEWED FROM TOP SIDE	BOARD #: MD067	REV: D	SUN REV: Not in version control
LAYER NAME =	TID #: N/A		
PLOT NAME = Signal 2	GENERATED : 8/15/2024 4:04:13 PM	TEXAS INSTRUMENTS	



ALL ARTWORK VIEWED FROM TOP SIDE	BOARD #: MD067	REV: D	SUN REV: Not in version control
LAYER NAME =	TID #: N/A		
PLOT NAME = Bottom Layer	GENERATED : 8/15/2024 4:04:13 PM	TEXAS INSTRUMENTS	

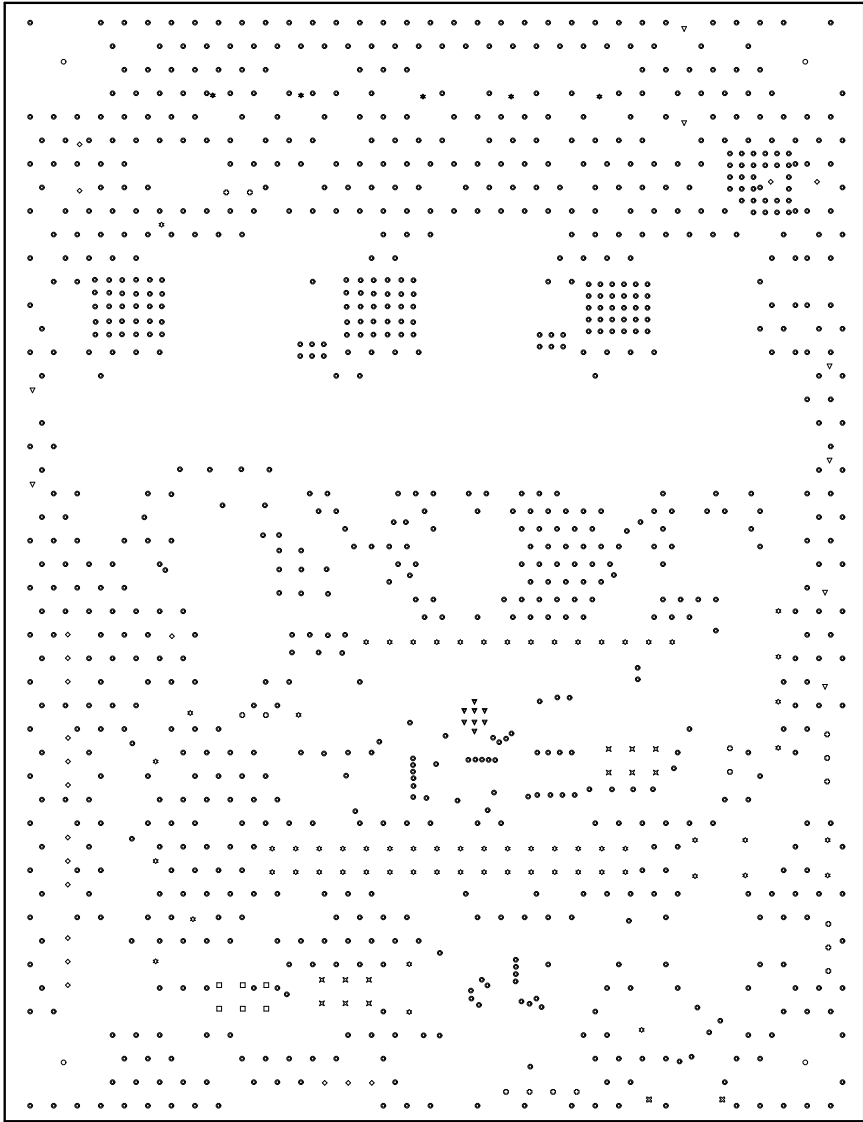


ALL ARTWORK VIEWED FROM TOP SIDE	BOARD #: MD067	REV: D	SUN REV: Not in version control
LAYER NAME = Solder Side	TID #: N/A		
PLOT NAME = Bottom Solder Mask	GENERATED : 8/15/2024 4:04:13 PM	TEXAS INSTRUMENTS	



ALL ARTWORK VIEWED FROM TOP SIDE	BOARD #: MD067	REV: D	SUN REV: Not in version control
LAYER NAME = Bottom Overlay	TID #: N/A		
PLOT NAME = Bottom Overlay	GENERATED : 8/15/2024 4:04:14 PM		TEXAS INSTRUMENTS

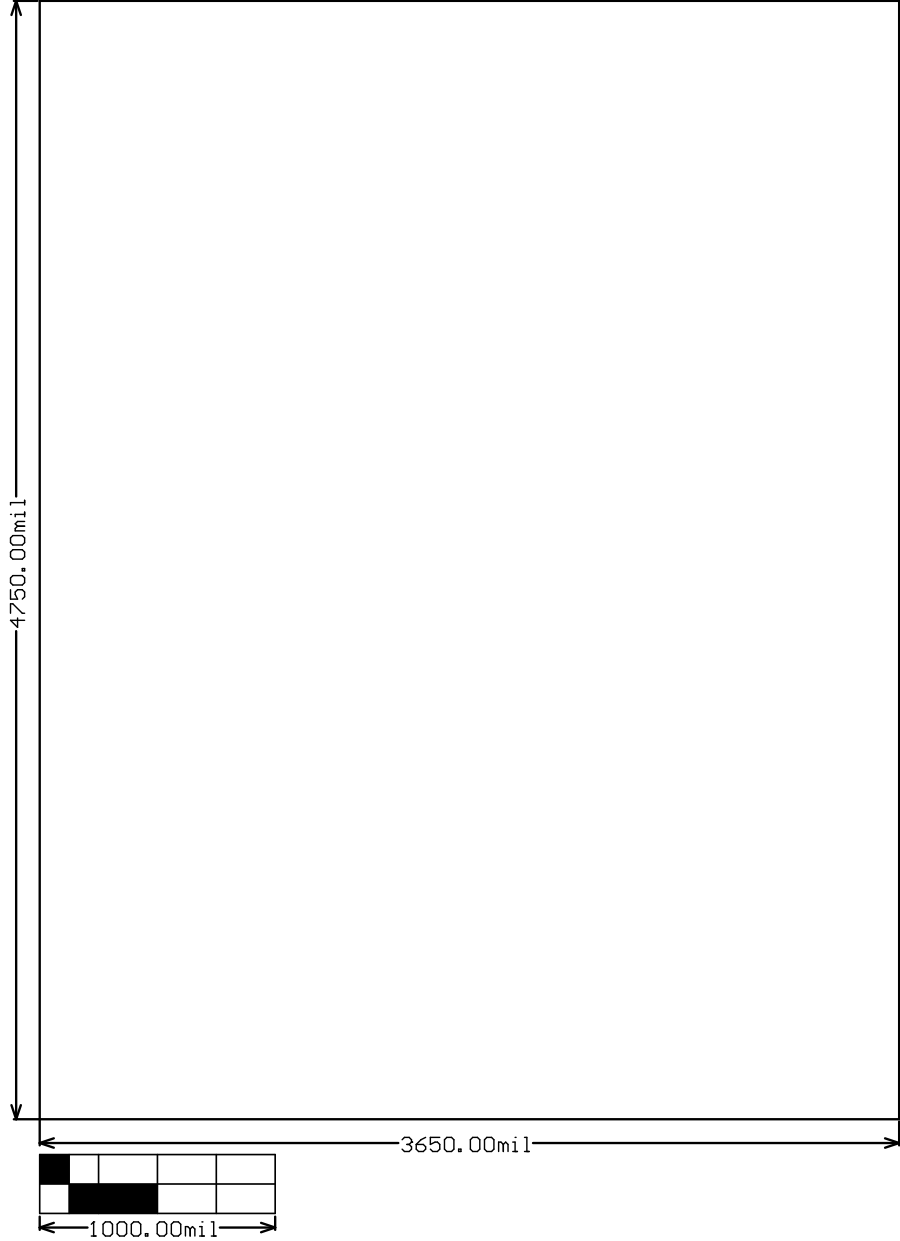




Symbol	Quantity	Finished Hole Size	Plated	Hole Type	Drill Layer Pair	Hole Tolerance
▽	8	7.87mil (0.200mm)	PTH	Round	Top Layer - Bottom Layer	
⊙	964	10.00mil (0.254mm)	PTH	Round	Top Layer - Bottom Layer	
□	6	23.62mil (0.600mm)	PTH	Round	Top Layer - Bottom Layer	
◇	20	33.47mil (0.850mm)	PTH	Round	Top Layer - Bottom Layer	
☆	66	40.00mil (1.016mm)	PTH	Round	Top Layer - Bottom Layer	
✕	12	43.31mil (1.100mm)	PTH	Round	Top Layer - Bottom Layer	
⊕	16	45.28mil (1.150mm)	PTH	Round	Top Layer - Bottom Layer	
▽	8	51.18mil (1.300mm)	PTH	Round	Top Layer - Bottom Layer	
☆	5	59.06mil (1.500mm)	PTH	Round	Top Layer - Bottom Layer	
○	4	125.98mil (3.200mm)	PTH	Round	Top Layer - Bottom Layer	
⊗	2	23.62mil (0.600mm)	PTH	Slot	Top Layer - Bottom Layer	
	1111 Total					

Slot definitions : Routed Path Length = Calculated from tool start centre position to tool end centre position.  
Hole Length = Routed Path Length + Tool Size = Slot length as defined in the PCB layout

ALL ARTWORK VIEWED FROM TOP SIDE	BOARD #: MD067	REV: D	SUN REV: Not in version control
LAYER NAME = Drill Drawing	TID #: N/A		
PLOT NAME = Drill Drawing	GENERATED : 8/15/2024 4:04:14 PM	TEXAS INSTRUMENTS	



ALL ARTWORK VIEWED FROM TOP SIDE	BOARD #:	MD067	REV:	D	SUN REV:	Not in version control
LAYER NAME = M2 Board Dimensions	TID #:	N/A				
PLOT NAME = Board Dimensions	GENERATED	: 8/15/2024	4:04:15 PM	TEXAS INSTRUMENTS		